

www.gowragreendale.com



**GOWRA**

**OFFICE ADDRESS:**

Gowra Palladium, Silpa Gram Craft Village,  
HITEC City, Hyderabad, Telangana - 500 081.

**SITE ADDRESS:**

Gowra Greendale, Nehru Outer Ring Road  
Exit 6 - 7, Pudur, Medchal, Telangana - 501 401.

Call: **+91 70905 00033**

Email: [sales@gowra.in](mailto:sales@gowra.in)

Follow Us: [f](#) [t](#) [in](#) [@](#)



TS RERA No: P02200008011  
HMDA PERMIT: 000207/LO/PLG/HMDA/2023

NOTE: This brochure is purely conceptual and not a legal offer. Area is tentative and actual areas arrived at completion of the plots may differ. The promoters reserve the right to make changes in the elevation, specifications and plans as deemed fit. \*T&C Apply

A PROJECT BY



**GOWRA**



**GOWRA**  
**GREENDALE**

@ Capt. Raju's Estate

📍 PUDUR, MEDCHAL

# WELCOME TO GOWRA GREENDALE

Step into a sanctuary where luxury, nature, and thoughtful design converge. Gowra Greendale is more than just a development; it's a vision of refined living set amidst Pudur's lush landscapes. Conveniently located near the IT Park and Outer Ring Road (ORR), every corner is crafted to evoke harmony, balancing serene natural settings with exceptional lifestyle conveniences, offering you a place not just live, but truly belong.



A Project By **GOWRA**



**GOWRA**  
**GREENDALE**

@PUDUR, MEDCHAL

Life

## A VISION OF GREEN LIVING

Gowra Greendale offers more than just villa plots—it's a thoughtfully planned development designed for eco-friendly and community-centric living. Set amidst lush natural surroundings, featuring premium amenities that complement the serene environment. Each villa plot provides the perfect starting point for creating your bespoke home, offering a peaceful and luxurious lifestyle in harmony with nature. Invest today and bring your dream home to life.



A Project By GOWRA

**40+** ACRES

**359** PLOTS

**25K** SFT. CLUBHOUSE

# Life



## NATURE INSPIRED LIVING

Gowra Greendale is developed with a commitment to sustainability, incorporating green infrastructure, eco-friendly practices, and water conservation systems. Live with a sense of purpose, knowing that your community is designed to minimize carbon foot print enhance quality of life for you and future generations.

**GOWRA**  
**GREENDALE**

@PUDUR, MEDCHAL



A Project By **GOWRA**



**GOWRA**  
**GREENDALE**

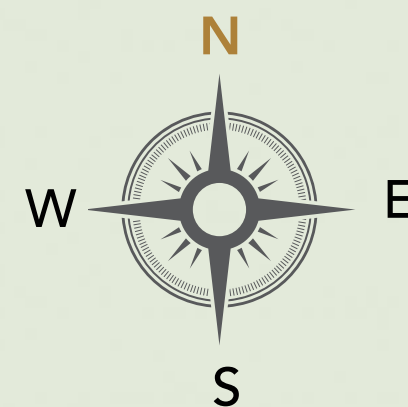
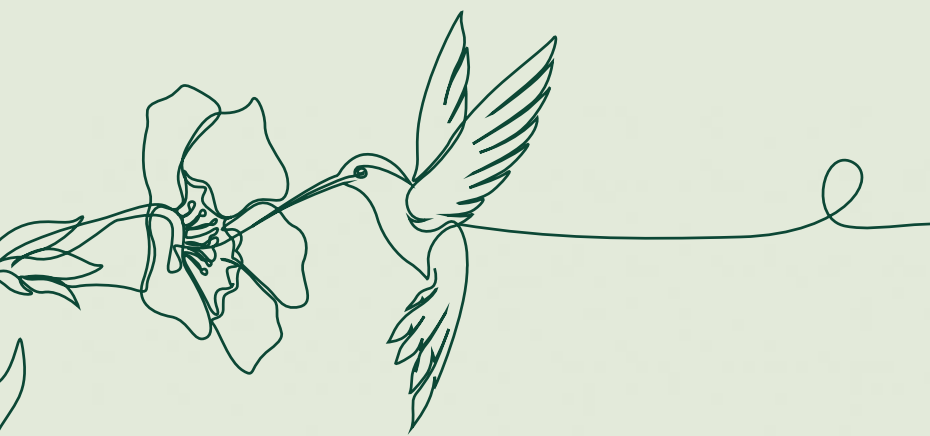
@PUDUR, MEDCHAL

Life

## DESIGN YOUR DREAM HOME

Our Villa Plot sizes starting from 213 square yards provide the perfect canvas for your villa. Surrounded by lush greenery, open spaces, and thoughtfully curated amenities, Gowra Greendale invites you to craft a home that truly mirrors your aspirations. Discover the freedom to design a home that reflects your unique vision with our premium villa plots in the prestigious Gowra Greendale.





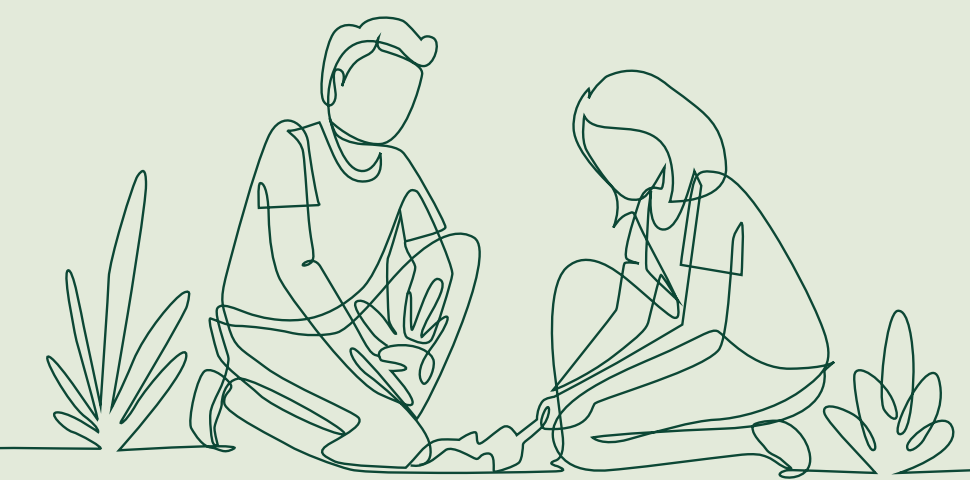
COMMERCIAL	
PREMIUM PLOT Corner & park facing	
EAST FACING	
WEST FACING	
CORNER PLOT	
30M ROAD FACING	
PARK FACING PLOT	



## LAYOUT PLAN

### LEGEND:

1. MAIN ENTRANCE & EXIT
2. CC ROAD
3. COBBLE PAVING AT ARCH
4. ROADSIDE FOOTPATH
5. OPEN SPACE ENTRY
6. CYCLE TRACK ENTRY
7. 2M CYCLE TRACK
8. LAWN
9. BASKET BALL COURT
10. VOLLEY BALL COURT
11. TENNIS COURT
12. DOG PARK
13. AMPHITHEATRE
14. PODIUM
15. PERGOLA SEATING
16. CRICKET NET
17. OPEN FITNESS CENTER
18. REFLEXOLOGY PARK
19. ELDERLY SEATING
20. CHILDREN'S PLAY AREA
21. TREE GROOVES
22. PICKLEBALL COURT
23. OVER HEAD TANK
24. CLUBHOUSE



# 40+ FEATURES



Reflexology Park



Cycle Track



Dog's Park



Children's Play Area



Fitness Open Gym



Yoga



Electricity



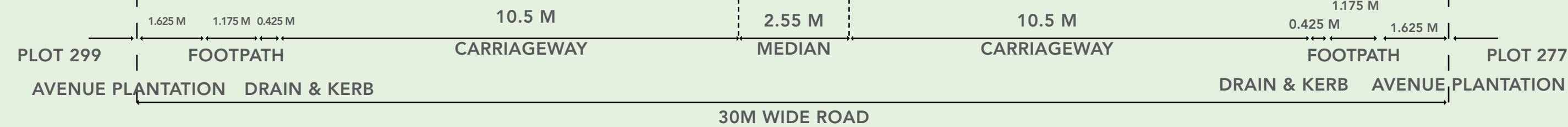
Water Supply

- Avenue Plantation | Open Space Entry | Walking Track | Lawn | Basketball Court | Volleyball Court | Tennis Court | Pickle Ball Court | Amphitheatre
- Podium | Pergola Seating | Cricket Net | Elderly Seating | Tree Grooves | Multipurpose Court | 24/7 Security | STP | Treated Water For Plants
- Drip Irrigation | Street Lighting | Rainwater Harvesting Pits | Over Head Water Tank | Cobble Stone Paving at The Entrance Arch | UG Sump
- Signages Indicating Roads & Plot Numbers | Entrance Ramps For Plot Entry | RCC Storm Water Main Drain | Green Strip On Either Side Of Main Storm Water Drain
- Footpath Paving | CC Road | Entrance Arch With Security Post | Roadside Footpath



ALLURING  
LANDSCAPES



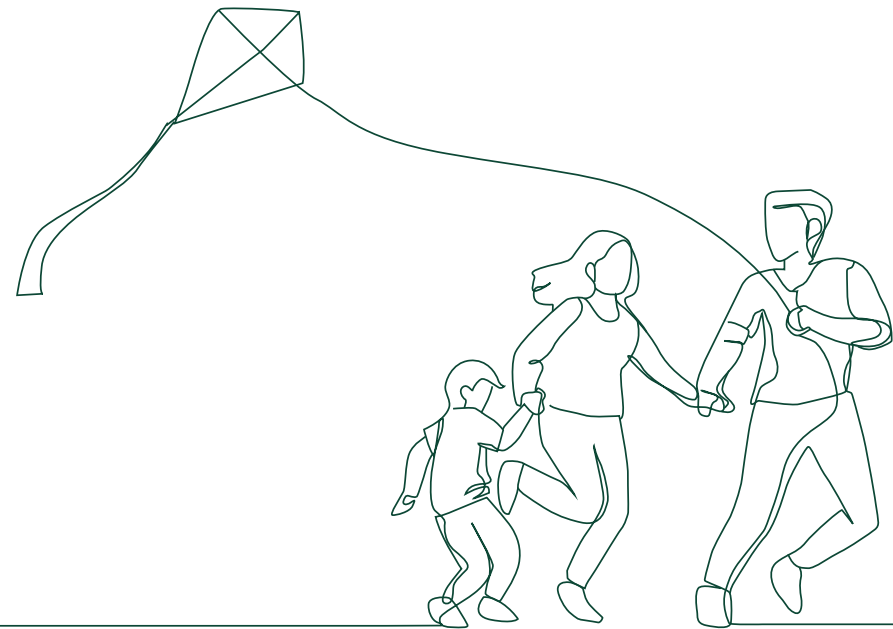




@PUDUR, MEDCHAL

## THE HEART

At the heart of Gowra Greendale lies our state-of-the-art clubhouse, a vibrant space designed to foster connections and offer luxury services. From mini supermarket to a serene yoga studio, each facility is thoughtfully crafted to meet the everyday needs and unique preferences of our residents. Embrace the true essence of community living with spaces that enrich your life.



# Life



A Project By GOWRA





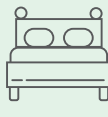
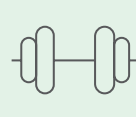





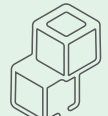



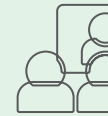
# CLUBHOUSE AMENITIES

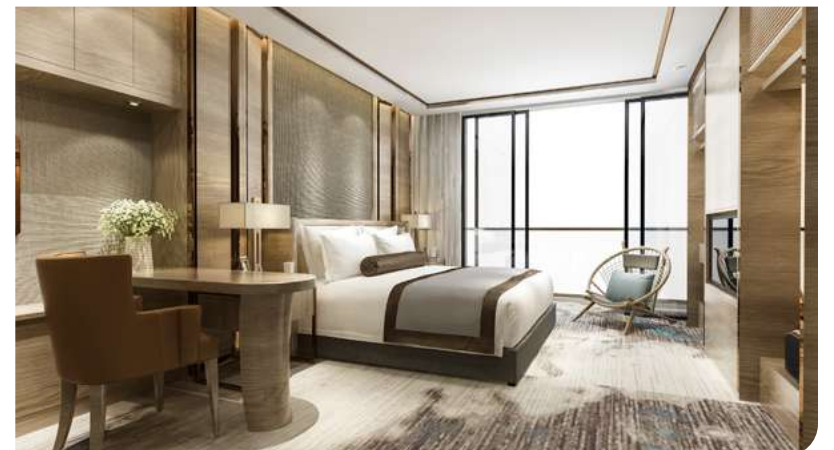
The clubhouse at Gowra Greendale is designed to elevate your lifestyle. Stay active with a state-of-the-art gym, yoga, meditation, and aerobics rooms, or unwind with indoor games and a library. Socialise over coffee at the café or host memorable gatherings in the banquet hall. Practical conveniences include a mini supermarket, a salon, a clinic, and even a crèche for young children. Designed to complement your lifestyle, the clubhouse at Gowra Greendale is where luxury meets functionality.



@PUDUR, MEDCHAL



 BANQUET HALL	 GUEST ROOMS	 GYM	 COFFEE SHOP	
 TERRACE SWIMMING POOL	 YOGA /MEDITATION/ AEROBICS ROOM	 SALOON	 CLINIC	
 CRECHE	 INDOOR GAMES	 LIBRARY ROOM	 MINI SUPERMARKET	 ACTIVITY ROOM



EXPERIENCE

# GREENBLISS

NATURALLY AT

**GOWRA  
GREENDALE**

A Project By **GOWRA**



**5** MINS TO

- Institute Of Public Enterprise
- Ivy League Academy
- Nalsar University Of Law
- NICMAR

**10** MINS TO

- Kandlakoya IT Hub
- Celebrity Resort
- Rainbow Resort
- DAV Public School
- Indus International School

**15** MINS TO

- Kandlakoya Oxygen Park & Aviary
- Aalankrita Resorts and convention
- Outer Ring Road Exit 6 & Exit 7
- Forest Ridge
- MMTS Station Gundlapochampally

**20** MINS TO

- CMR Group of Colleges
- T.I.M.E School
- Birla Institute of Technology & Science Pilani